

# LONGMONT

LONGMONT, COLORADO



## 2019 COMMUNITY PROFILE

### CONTENTS

- 2 THE RIGHT LOCATION**  
Location, Transportation, National Rankings
- 3 THE RIGHT COSTS**  
Taxes
- 4 THE RIGHT INFRASTRUCTURE**  
Electricity, Natural Gas, Water, Wastewater, Internet Services
- 6 THE RIGHT TALENT**  
Labor Force & Employment, Entry Level Wages for Select Occupations, Education
- 8 THE RIGHT DECISION**  
Major Employers, Incentives, Enterprise Zone
- 10 THE RIGHT ENVIRONMENT**  
Climate, Healthcare, Housing, Community Services, Cultural Attractions
- 11 THE RIGHT ATTITUDE**  
Government, Directory
- 11 THE RIGHT SUPPORT**  
Longmont Economic Development Partnership Info



ELEVATING BUSINESS. EMPOWERING COMMUNITY.

Longmont Economic Development Partnership  
630 15<sup>th</sup> Avenue, Suite 100A | Longmont, CO 80501  
303.651.0128 | [longmontedp@longmont.org](mailto:longmontedp@longmont.org)  
[WWW.LONGMONT.ORG](http://WWW.LONGMONT.ORG)  
#advancelongmont

# THE RIGHT LOCATION

The right location - it's a critical component to your division or company's ability to succeed. So where does your company belong? It belongs in a place where innovation thrives; where you can find the talent you need, costs you can afford, business environment that will foster your company's growth, and a lifestyle your employees desire. It belongs in a place where "Ideas Become Products". Few places in the US meet all of these criteria...Longmont, Colorado is one of them.



## LOCATION

**LATITUDE/LONGITUDE:** 40.16394, -105.10251  
**ELEVATION:** 4,979 feet  
**AREA WITHIN CITY LIMITS:** 22 square miles

<u>DISTANCE FROM</u>	<u>MILES</u>	<u>DIRECTION</u>
Denver	35	South
Boulder	15	Southwest
Fort Collins	40	North
Loveland	18	North
Greeley	40	Northeast
Colorado Springs	105	South
Grand Junction	276	West



## TRANSPORTATION

**AIR SERVICES:** Denver International Airport (Denver), Vance Brand Municipal Airport Longmont - 75 x 4,800 foot runway  
**HIGHWAY ROUTES:** Interstate 25, US Hwy 287, CO Hwy 119, CO Hwy 66  
**TRUCK SERVICES:** 3 local movers provide service to Longmont and have terminal facilities in Longmont.  
**RAIL SERVICES:** Burlington Northern and Great Western  
**BUS SERVICES:** Inner-City and Metro: Regional Transportation District (RTD), Fare: \$3.00

Sitting at the intersection of high technology and manufacturing, Longmont exemplifies the best of the Front Range, offering a unique combination of infrastructure, high quality of life, skilled workforce, and business friendly climate while remaining affordable and welcoming.

## NATIONAL RANKINGS

- #7 of 10 Best Places to Get a Fresh Start - Livability, 2019
- Fastest Internet Speed - United States - PC Magazine, 2018
- 2<sup>nd</sup> in Top 10 Cities for STEM Workers, Livability, 2018
- "7 Small Beer Cities that Deserve National Attention", Thrillist, 2018
- #23 of 100 Best Places to Live - Livability, 2016
- Top 10 Best Alternative for Offshoring I.T. & Other Business Services - The Hackett Group, 2015
- #9 Best U.S. Cities for First-Time Home Buyers - WalletHub, 2015
- #3 Most Family-Friendly Communities in Colorado - Westword, 2015
- #11 Best Places for Millennial Job Seekers in Colorado - NerdWallet, 2015

**LONGMONT  
POPULATION**  
  
94,341

# THE RIGHT COSTS

Business success is also a function of costs and Longmont provides a very competitive cost environment. From electrical rates that are among the lowest in Colorado and the nation, attractively priced real estate for leasing space or building facilities, to the most affordable housing in Boulder County, operational savings in Longmont help add to the bottom line. The cost of doing business in Longmont is even more remarkable given the level of talent, the quality of life, the condition of infrastructure, the business environment, and the low cost of taxes.

## TAXES

**CORPORATE INCOME TAX:** 4.63% of Colorado taxable income

- Colorado has abolished the worldwide unitary method of allocating corporate income for taxing purposes.
- Colorado also offers a 1% investment tax credit, up to a maximum of \$1,000.

**PERSONAL INCOME TAX:** 4.63% of Colorado taxable income

### PROPERTY TAXES:

- Property is assessed at 29% for industrial/commercial of actual value and 7.96% for residential. (Actual assessment average 10% to 15% of current market value.)
- Inventories are exempt from property taxation.

**SALES AND USE TAX:** 8.515%

- 2.9% State, 3.53% City, 1.0% Regional Transportation District, .10% culture, and .985% open space, for a total of 8.515%
- Exemption: Both Longmont and the State of Colorado exempt machinery and equipment (used in manufacturing) purchases from the State 2.9% and Longmont 3.53% sales/use tax.

### UNEMPLOYMENT INSURANCE:

- New employer standard = 1.7% of each persons' wages up to the first \$10,000.

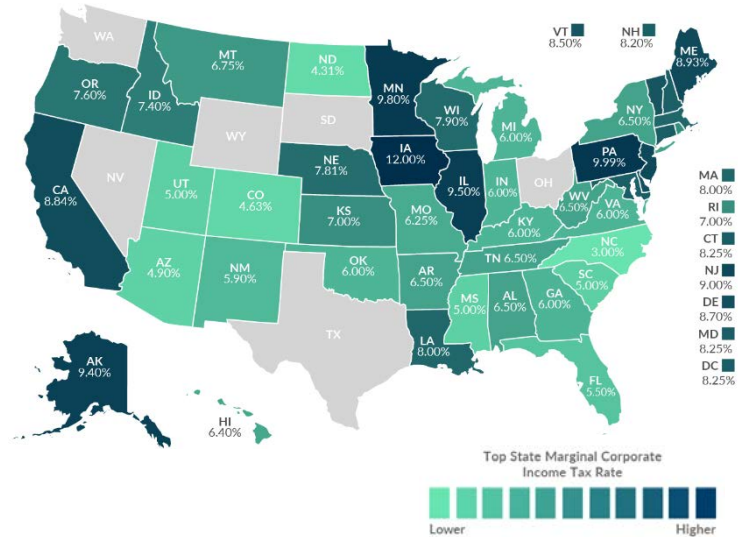
### WORKERS COMPENSATION:

- Based on payroll and subject to industry type

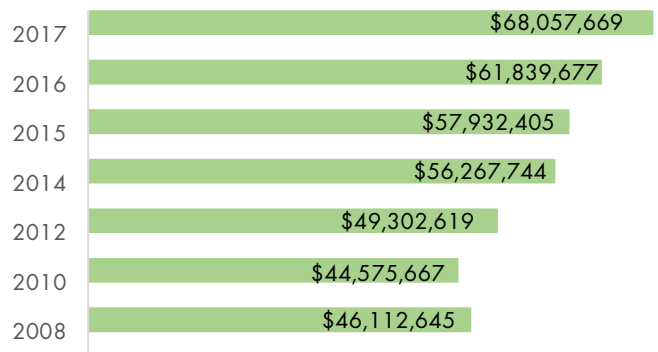
### MILL LEVIES:

■ Boulder County	22.726
■ St. Vrain Valley School District	56.394
■ NC Water & conservancy	1.000
■ City of Longmont	13.420
■ St. Vrain Lefthand Water District	0.156
■ <b>Total Mill Levy</b>	<b>93.696</b>

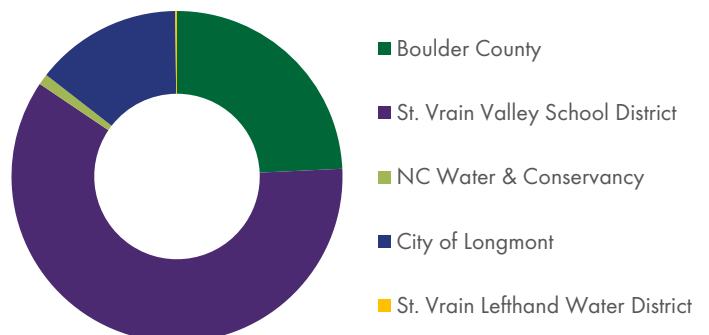
## CORPORATE INCOME TAX RATES BY STATE IN 2018



## SALES & USE TAX COLLECTIONS



## MILL LEVIES



# THE RIGHT INFRASTRUCTURE

Longmont has a long history of investing in the infrastructure necessary to meet the growth needs of the community. It currently has the best water supply along the Front Range, a dedicated portion of sales tax for transportation improvements, our own electric utility and generation arm, a community-owned city-wide 100% fiber-optic NextLight™, and a full-service city government.

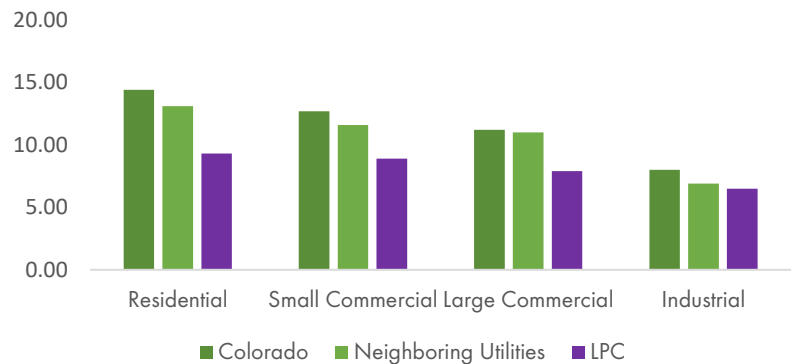
## ELECTRICITY

Longmont Power & Communications (LPC) is a community-owned, non-profit electric distribution and internet utility that operates under the direction of the Longmont City Council. LPC's electric rates are among the lowest in Colorado and the nation, at 29% below the state average. The typical blended rate is approximately 8.4 cents per kwh for commercial and 6.5 cents per kwh for industrial applications. The LPC system reliability is in the top quartile when compared to regional utilities and utilities of similar size.

Platte River Power Authority (PRPA) is a joint action electric generation and transmission provider for Longmont. Longmont's substations are served by a PRPA 115 kV and 230 kV transmission system, which is designed with redundant equipment, looped connectivity, and diverse construction to provide the highest level of reliability. LPC's system includes 7 distribution substations served by the PRPA transmission system, looped main feeders and associated distribution circuits operating at 12.47 kV. LPC distribution facilities have the capacity and are designed to provide backup service in the event of equipment failure anywhere on the system. Substations are sized and scheduled to provide sufficient reserve capacity to cover the loss of any entire substation within the system while maintaining a 15% safety margin. Main distribution feeders are designed to operate at levels that allow for the backup of adjacent feeder sections if failures occur. LPC presently serves a peak demand of about 186 MW and the system expansion plan accommodates a full City build out to about 400 MW.

## AVERAGE ELECTRIC RATE

As of January 2019



### RESIDENTIAL:

- Customer charge = \$12.40/month
- Energy Charge:
  - 0 - 750 kWh, \$0.0755/kWh
  - 751 - 1500 kWh, \$0.0872/kWh
  - 1501 and above kWh, \$0.0999/kWh

### SMALL COMMERCIAL: (Demand under 50 kWh/month)

- Customer charge = \$20.40/month
- Energy Charge = \$0.0792/kWh

### LARGE COMMERCIAL: (Demand from 50 - 800 kWh/month)

- Service Charge = \$82.50/month
- Demand Charge = \$10.40/kWh
- Energy Charge = \$0.0472/kWh

### INDUSTRIAL: (Demand 800 kWh/month and above)

- Rates vary by customer based on their individual cost of service.

## NATURAL GAS

Source: Xcel Energy

### COMMERCIAL SMALL – CSG:

- Service Charge: \$32.08/month
- Usage Charge: \$0.11676/therm
- Monthly minimum: \$32.08

### COMMERCIAL LARGE – CLG:

- Service Charge: \$65.12/month
- Usage charge: \$0.1854/Dth
- Capacity Charge, per peak day quantity in Dth: \$6.75

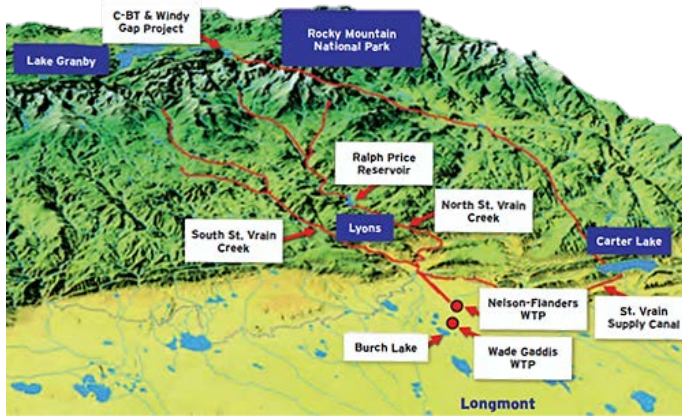
### RESIDENTIAL:

- Service Charge: \$11.15/month
- Usage Charge: \$0.08440/therm
- Monthly Minimum: \$11.15



## WATER

The City of Longmont has an exceptional water system that comes primarily from Rocky Mountain National Park.



## 2019 WATER RATES:

- Small commercial users volume charge: \$3.73/1,000 gallons
- Large commercial users volume charge: Negotiated (160 gallons/minute continuous flow and 4 inch meter or larger)
- Monthly service charge for:
  - 2" meter: \$43.01/month
  - 4" meter: \$133.56/month
  - 6" meter: \$263.44/month

## 2018 WATER USAGE DATA:

- Average daily flow: 13.75 million gallons/day
- Peak flow: 30.79 million gallons/day
- Treatment system capacity: 54.75 million gallons/day

## WASTEWATER

### 2019 WASTEWATER RATES:

- All users volume charge: \$5.27/1,000 gallons
- All users monthly service charge: \$11.25/month

### 2018 WASTEWATER USAGE DATA:

- Average daily flow: 7.00 million gallons/day
- Peak flow: 15.99 million gallons/day
- Treatment system capacity: 13 million gallons/day | 22.1 million gallons/day\*\*

\*Average daily flow during maximum month  
 \*\*Peak daily flow

## INTERNET SERVICES

Besides offering several local and national providers, Longmont has built NextLight™, a citywide community-owned 100% fiber-optic broadband network that offers Fiber-to-the-Premises for both commercial and residential customers within the city limits. With NextLight's unmatched combination of speed and affordability, Colorado's first "Gigabit City" is positioned to be a leader in digital communications and a global information hub.

### COMMERCIAL:

- Speeds available up to 1Gbps; higher speeds provided on custom basis
- Rates from \$49.95 (25 Mbps) to \$799.95 (1Gbps)
- Symmetrical speeds and static IP available
- Digital Voice phone service available beginning at \$22.95/month with term discounts and free nationwide long distance

### TIME IT TAKES TO BACKUP A 4 GIGABYTE HARD DRIVE

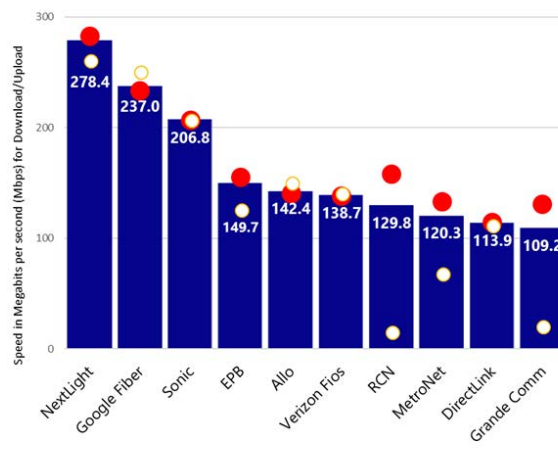


**32 Seconds:** NextLight 1Gbps (1,000Mbps) connection



**53 Minutes:** Traditional 10Mbps connection

### Fastest ISPs 2018—United States (All ISPs)



PCMag Speed Index represents 80 percent Download Speed + 20 Percent Upload Speed

For more information about NextLight, visit [www.longmontcolorado.gov/nextlight](http://www.longmontcolorado.gov/nextlight). To sign up for service or inquire about availability, call 303-651-8386.

# THE RIGHT TALENT

Longmont and Boulder County have the talented workforce you are seeking. The addition of several research universities in close proximity to Longmont also makes finding emerging talent easy, not to mention collaborations and tech transfer options with these universities. Add federal laboratories and the existence of world class companies to the mix and you have an atmosphere that can serve your company's intellectual needs. Finally, Longmont offers a quality of life that makes people want to stay in the region, as evidenced by our large entrepreneurial community. This makes retaining talent as easy as recruiting talent worldwide. From any perspective, the Longmont area can provide the talent you need.

## LABOR FORCE & EMPLOYMENT

<u>OCCUPATION</u>	<u>BOULDER COUNTY</u>	<u>METRO DENVER</u>
<b>LABOR FORCE</b>	<b>193,988</b>	<b>1,643,442</b>
Accommodation and Food Service	18,780	141,405
Administrative and Waste Services	6,409	101,880
Agriculture, Forestry, Fishing, Hunting	693	3,764
Arts, Entertainment, and Recreation	3,259	31,597
Construction	5,808	99,826
Educational Services	20,843	103,139
Finance and Insurance	4,054	78,506
Health Care and Social Assistance	23,233	181,766
Information	8,371	51,227
Management of Companies	1,572	33,462
Manufacturing	19,295	69,905
Mining	197	9,959
Other Services, Ex. Public Admin.	5,491	46,332
Professional and Technical Services	28,598	140,499
Public Administration	8,799	73,532
Real Estate and Rental and Leasing	2,802	30,166
Retail Trade	17,652	138,173
Transportation and Warehousing	2,121	63,935
Unclassified	3,831	115,613
Utilities	257	5,751
Wholesale Trade	6,564	73,337
<b>TOTAL EMPLOYMENT</b>	<b>188,629</b>	<b>1,593,774</b>

## ENTRY LEVEL WAGES FOR SELECTED OCCUPATIONS

<u>OCCUPATION</u>	<u>BOULDER/LONGMONT AVERAGE</u>
Production worker	\$15.77/hr.
Secretary - Executive	\$26.59/hr.
Machinist	\$26.74/hr.
Electrical Engineer	\$45.85/hr.
Electronic Assembler	\$18.65/hr.
Computer Support Specialist	\$28.44/hr.
Building Maintenance/Janitor	\$14.30/hr.
Sheet Metal Worker	\$19.86/hr.
Truck Driver - Industrial & Tractor	\$17.85/hr.

**3.3%**  
**UNEMPLOYMENT RATE**  
*as of December, 2018*

**59%**  
**OF BOULDER COUNTY  
 RESIDENTS HOLD A  
 BACHELOR'S DEGREE  
 OR HIGHER**

## EDUCATION

In addition to the St. Vrain Valley School District (the state's 7th largest) and the Boulder County campus of Front Range Community College, Longmont is conveniently located in close proximity to the University of Colorado (20 minutes), Colorado State University (40 minutes), University of Denver and the Colorado School of Mines (60 minutes).

## COLLEGES & UNIVERSITIES:

### FRONT RANGE COMMUNITY COLLEGE BOULDER COUNTY LONGMONT CAMPUS

2018 Enrollment: 1,757

Since 1982, Front Range Community College has maintained a growing presence in Boulder County. Today, their Boulder County Campus serves more than 4,400 students seeking career/technical training or general education courses to transfer.

### UNIVERSITY OF COLORADO BOULDER, COLORADO

2018 Enrollment: 34,510

- 2017 Degrees Awarded:
  - Bachelors: 6,010
  - Masters: 1,375
  - Doctorates/Professionals: 588

Located at the foot of the Rocky Mountains, the University of Colorado Boulder has an awe-inspiring view from campus. Their world-renowned faculty maintain a reputation for excellence in research, creative work and teaching across 150 academic fields. CU Boulder prepares students to become leaders within Colorado and throughout the world.

### COLORADO STATE UNIVERSITY FORT COLLINS, COLORADO

2018 Enrollment: 25,903

Our State is Colorado, but Rams are built on a global scale. They unite in Fort Collins, where their diverse backgrounds, cultures, and experiences strengthen the community. True to their land-grant beginnings, they focus on practical solutions for today and tomorrow.

## OTHER COLLEGES AND UNIVERSITIES WITHIN A 50-MILE RADIUS OF LONGMONT:

Aims Community College  
Community College of Denver  
Red Rocks Community College  
Arapahoe Community College



1. University of Colorado Boulder Boulder, CO 80309
2. Front Range Community College 2190 Miller Dr. Longmont, CO 80501
3. Colorado State University 711 Oval Dr. Fort Collins, CO 80521
4. Colorado School of Mines 1500 Illinois St. Golden, CO 80401
5. University of Northern Colorado 501 20th St. Greeley, CO 80639
6. University of Denver 2199 S University Blvd. Denver, CO 80210
7. University of Colorado Denver 1250 14th St. Denver, CO 80202
8. Metropolitan State University of Denver 890 Auraria Pkwy. Denver, CO 80204
9. Regis University 3333 Regis Blvd. Denver, CO 80221

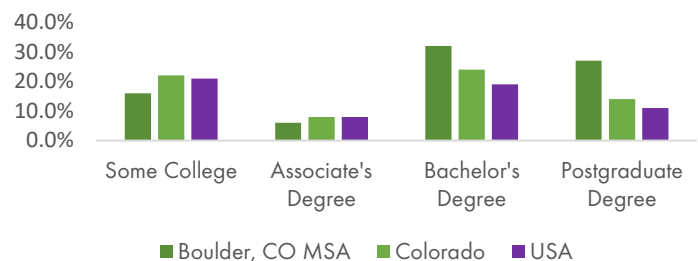
Colorado School of Mines Enrollment: 6,268  
University of Northern Colorado Enrollment: 12,500  
Metro State University of Denver Enrollment: 19,000  
University of Denver Enrollment: 11,434

## EARLY EDUCATION:

Regional STEM Preschool:	1
PK-8 Schools:	1
Elementary Schools:	23
K-8 Schools:	1
Middle Schools:	7
Middle/Senior Schools:	1
High Schools:	7
Alternative Schools:	1
Charter Schools:	6
Career Center:	1
Innovation Center:	1

## EDUCATIONAL ATTAINMENT SNAPSHOT

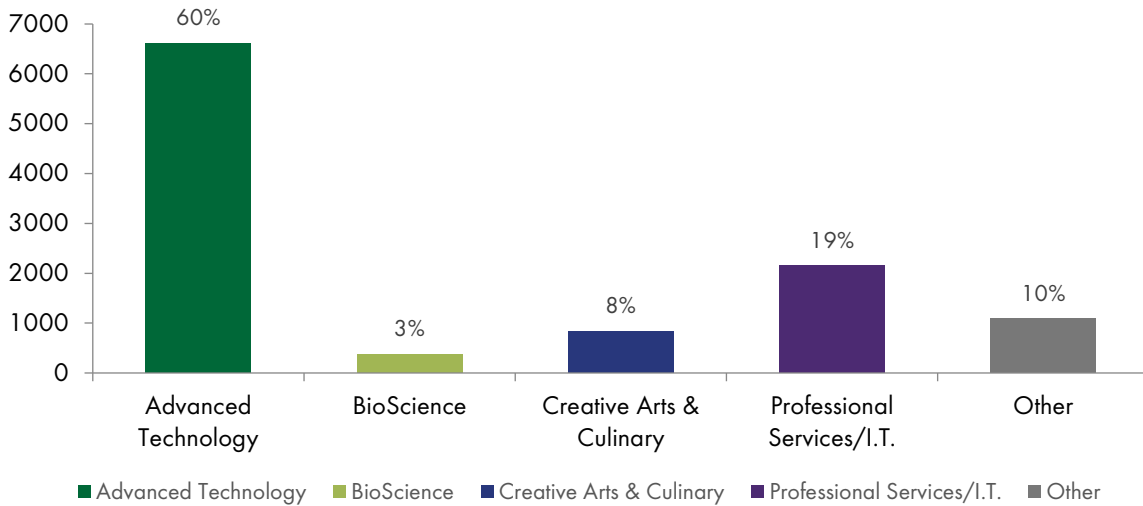
Source: EMSI



# THE RIGHT DECISION

For many companies, relocation or expansion to a new community is a major decision. The risk associated with this decision is often mitigated by reviewing the choices of other companies. The Longmont area has a plethora of companies that came in search of the quality workforce available in Boulder County. From cutting edge industries such as aerospace, renewable energy, information technology, and biosciences; to support industries such as plastics, metals and machining - Longmont has a diverse industry base. Fifty percent of primary employment in Longmont is provided by advanced technology companies, a factor of several times greater than the national average. That's because these companies can find the quality of talent they need in Longmont, especially in the area of engineering.

## 2019 PRIMARY EMPLOYMENT DISTRIBUTION



## MAJOR EMPLOYERS IN THE BOULDER/LONGMONT AREA

<u>FIRM</u>	<u>PRODUCT</u>	<u>EMPLOYEES</u>
CenturyLink	Communication & Internet Systems	2,360
Medtronic	Medical Devices & Products	2,460
Oracle	Software & Network Systems	2,000
IBM Corporation	Computer Systems & Services	1,690
Seagate Technology	Computer Hard Drives	1,430
Ball Aerospace	Satellite Products & Equipment	1,510
Hunter Douglas	Window Coverings Manufacturing	980
Google	Internet Services and Products	800
Sierra Nevada	Aerospace Systems	750
West Safety Services	911 Database Service	590
Vail Resorts	International Ski Area Operations	580
McLane Western	Grocery Distribution Center	460

## OTHER MAJOR EMPLOYERS ON THE COLORADO NORTHERN FRONT RANGE

<u>FIRM</u>	<u>PRODUCT</u>	<u>EMPLOYEES</u>
JBS USA	Beef Processing/Corporate Office	4,590
Vestas	Wind Turbine Manufacturing	2,270
Broadcom	Semiconductor Components	1,600
Woodward Governor	Speed Controls	1,500
Hewlett Packard	Technology Product Design	1,130
Halliburton	Oil & Gas Development	1,030
Qualfon	Customer Care Center	870
Hach Company	Analytical Instruments	840
Anheuser-Busch	Beverages	760
Tolmar, Inc.	Pharmaceuticals	650



## INCENTIVES

Relocate to Longmont and you will find a variety of incentive programs, training programs, and other benefits at your doorstep.

### CITY OF LONGMONT INCENTIVES:

- Development Fee Rebates | Fees eligible for rebate include building permit/plan review and (non-earmarked) City sales tax
- Personal Property Tax Rebates | 50% rebate for each of four years of the City's portion of personal property taxes for new and expanding primary employers
- R&D Sales and Use Taxes | New businesses are exempt from paying the City 2.0% (non-earmarked) sales and use tax on the purchase and use of R&D equipment for the first two years.
- Manufacturing Equipment | Exempts businesses from paying the City 2.0% (non-earmarked) sales and use tax on the purchase and use of machinery and machine tools with a cost in excess of \$1,000 to be directly used in Longmont
- Fast-Track Process | Expedited process for primary employer projects doing tenant improvements or new construction

### STATE OF COLORADO INCENTIVES:

- Job Growth Tax Incentive | Provides a state income tax credit to businesses undertaking job creation projects that would not occur in Colorado without this program.
- Strategic Fund Incentive | Supports and encourages new business development, business expansions and relocations that have generated new jobs throughout the state.
- Enterprise Zone Tax Credits | *See below.*
- Colorado FIRST / Existing Industry Customized Job Training Programs | Increase transferable job skills that support both the company's economic competitiveness and enhance worker's resumes and long-term employment opportunities.

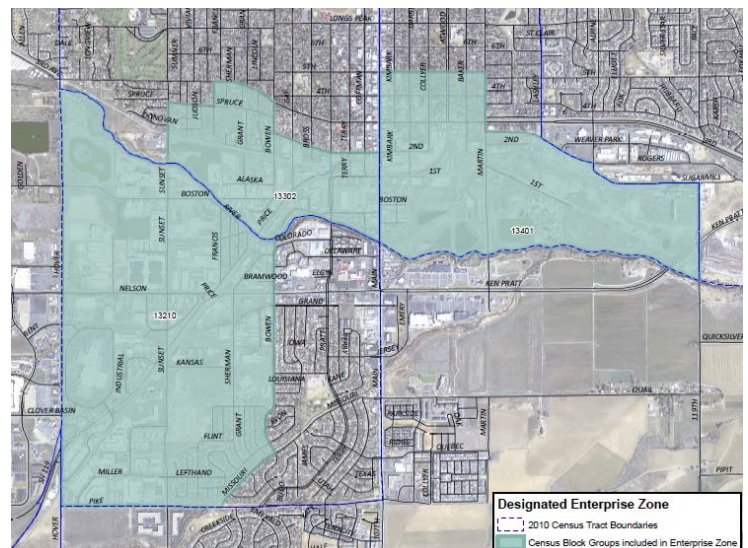
For more details on available incentives, visit [www.longmont.org/site-selection](http://www.longmont.org/site-selection) or contact the Longmont EDP at 303-651-0128.

## NORTH METRO ENTERPRISE ZONE

The North Metro Enterprise Zone (EZ) is a state funded program that was created to promote a business-friendly environment in economically distressed areas by offering state income tax credits that incentivize business to locate and develop in these communities. EZ tax credits have a significant impact, from \$1,000 to \$500,000. The following incentives can be earned by businesses located in the Enterprise Zone for the tax year beginning 1/1/2016 and after:

### BUSINESS INCOME TAX CREDITS:

- Investment Tax Credit | 3% of equipment purchases | [more info](#)
- Commercial Vehicle Investment Tax Credit | 1.5% of commercial vehicle purchases | [more info](#)
- Job Training Tax Credit | 12% of qualified training expenses | [more info](#)
- New Employee Tax Credit | \$1,100 per new job
- Agriculture Processor New Employee Tax Credit | \$500 per new job
- Employer Sponsored Health Insurance Credit | \$1,000 per covered employee
- R&D Increase Tax Credit | 3% of increased R&D expenditures | [more info](#)
- Vacant Building Rehabilitation Tax Credit | 25% of rehab expenditures (hard costs) | [more info](#)



### ADDITIONAL EZ INCENTIVES:

- Manufacturing/Mining Sales and Use Tax Exemptions | Expanded S&U tax exemption in EZ | [more info](#)
- Contribution Tax Credit | 25% cash / 12.5% in-kind on contributions to EZ projects | [more info](#)

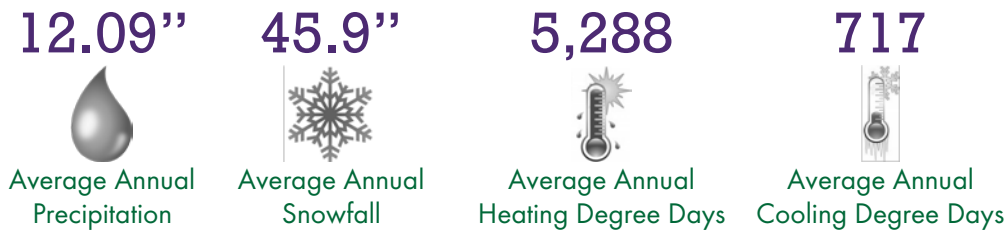
To learn more about these incentives, or to find out if your business is located within the North Metro Enterprise Zone, visit [www.longmont.org/site-selection/nmez](http://www.longmont.org/site-selection/nmez)

# THE RIGHT ENVIRONMENT

In the end, your company is about your people. Having an unsurpassed quality of life makes it easier to recruit and retain the talent you need. Longmont offers that quality of life in a variety of ways: education, healthcare, climate, recreation, arts, community involvement, visual beauty... you name it. In addition to the attributes available in Longmont, its central location makes it an easy jaunt to the mountains, downtown Denver, sporting events, etc. The quality of life in Longmont and the surrounding area is why the people who come here tend to stay. That is why Boulder County has one of the strongest entrepreneurial climates in the U.S.

## CLIMATE

	<u>AVERAGE HIGH</u>	<u>AVERAGE LOW</u>	<u>MEAN</u>
Coldest Month - December	43.5°	18.5°	31.0°
Hottest Month - July	88.0°	59.0°	73.5°



## HEALTHCARE

Longmont United Hospital/Centura Health is a community based, not-for-profit, 201 bed facility. It is dedicated to improving the health of the patients and communities it serves. The hospital is one of only twelve hospitals in North America to have received the Planetree Patient-Centered Hospital designation. UCHealth Longs Peak Hospital has 53 inpatient beds with room to expand to more than 100. The hospital features an intensive care unit, a Level 111 trauma center and emergency department, operating rooms, advanced cardiac services, and a surgery center.

## HOUSING

Longmont offers the most affordable housing in Boulder County. The median cost of a single-family home in Longmont is \$391,700 and the average wage in Longmont is \$52,912. That being said, the housing stock ranges from executive housing to entry level. There are historic neighborhoods and new subdivisions in every part of town. Longmont also has the amenities that households expect with parks, trails, open space, retail, services and a transportation network to connect them to the rest of the region.

## COMMUNITY SERVICES



## CULTURAL ATTRACTIONS

- The Longmont Symphony Orchestra
- The Longmont Theatre Company
- The Longmont Museum
- Vance Brand Civic Auditorium
- Rocky Mountain National Park
- Within driving distance of 29 ski areas
- Within the Denver metro area, attractions include: professional sports, museums, and many performing arts centers

# THE RIGHT ATTITUDE

Your company has to move at the speed of business. Ultimately time does mean money and in Longmont, we are sensitive to the needs of your company. That is why we have mechanisms in place to help you move through the development or relocation process to encourage your move to Longmont. In most cases we can match your timeline by expediting the regulatory approval process, coordinating with various City and State departments to make sure you have the necessary information to finalize your plans. In fact, all the local departments involved in development review are housed in a single facility, the Development Services Center, to expedite the process. The City has also established a rapid response team with participation from multiple departments to mobilize the necessary resources to meet your company's timeline. From an incentives standpoint, Longmont has tax incentives directed at a variety of activities including manufacturing, R&D, new construction or tenant finish, and personal property investment. We also coordinate incentives that are available from the Colorado Office of Economic Development including employee training and job creation grants.

## GOVERNMENT

### CITY GOVERNMENT:

- Mayor and City Council are elected
- City Manager is appointed by the City Council

### COUNTY GOVERNMENT:

- Three elected commissioners who serve 4-year terms

## DIRECTORY

### SITE SELECTION & EXISTING BUSINESS PERMITS & CODES:

Longmont EDP	303-651-0128
City of Longmont	303-776-6050
Boulder County	303-441-3525

### RESIDENTIAL REAL ESTATE:

Longmont Association of Realtors	303-772-5555
----------------------------------	--------------

### NEW RESIDENTIAL:

Builders Association	303-778-1400
----------------------	--------------

# THE RIGHT SUPPORT

The Longmont Economic Development Partnership leads a comprehensive, collaborative economic development strategy to promote and strengthen our community's economic health.

The Longmont Economic Development Partnership (EDP) works constantly to provide support and resources for ALL existing and prospective Longmont businesses to promote a strong business environment in Longmont and to encourage economic development through business attraction, retention, expansion, and creation.

Longmont EDP does this by:

- Serving as an agent for the City of Longmont to promote and provide resources to drive economic growth for all Longmont business. Longmont EDP is the front door for business in Longmont.
- Bringing in external resources to the community to provide new opportunities and strengthen Longmont's competitive position.
- Providing the community with unique expertise and leadership in economic development by staffing certified economic developers with a combined 60+ years of experience.
- Identifying creative and innovative solutions to drive the creation and retention of quality jobs in Longmont
- Joining together the resources of both public and private sectors to create a collective impact.

A 501c(6) nonprofit organization founded in 1981, the Longmont EDP is funded with both public and private dollars. The City of Longmont, Boulder County, and Platte River Power Authority are the public supporting organizations, and there are more than 150 private sector businesses that are partners of the organization as well. This partnership allows the Longmont EDP to be a broadly supported organization that provides a collaborative business environment to strengthen Longmont's economic health.



## Longmont Economic Development Partnership

630 15<sup>th</sup> Avenue, Suite 100A

Longmont, CO 80501

303-651-0128

[longmontedp@longmont.org](mailto:longmontedp@longmont.org)

[WWW.LONGMONT.ORG](http://WWW.LONGMONT.ORG)

#advancelongmont